



Holy Family School, Porirua

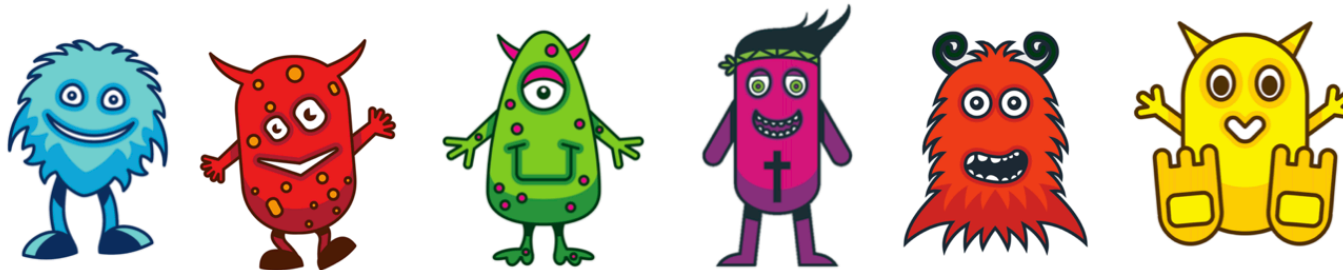


Strategic Plan 2024- 2026

Principal: **Suzanne Goodin**

Presiding Member: **John Lafaele**

Submitted: **1 March 2024**



Overview: The Board of Trustees has prepared this strategy plan as part of its planning for 2024, which includes consultation with our local community, the Porirua East Kāhui Ako and the Catholic Communities. Holy Family School Board of Trustees intends to follow the National Education and Learning Pathways as well as endeavouring to meet community aspirations.

HFS Vision:

“Holy Family School students embrace and embody the Gospel Values & are lifelong learners who think critically and contribute confidently to society”

School Description: *Holy Family School was founded originally to serve the Catholic community of the Parish of Holy Family in Porirua East by the Brigidine Sisters. The school belongs to the Catholic Archdiocese of Wellington. Roughly 50% of the community who send their children to the school are also parishioners of Holy Family Parish. The school is situated at 169 Mungavin Avenue, adjacent to the Holy Family Parish Church. The maximum roll of the school is 305 set by the school’s Integration Agreement 8 September 1981. The children attending the school are drawn from all of the Porirua East area, extending from Ascot Park in the north to Ranui Heights in the south. There is a strong sense of community within the school and every encouragement is given to parent participation. We have high expectations for our staff, students and community. The school values an environment where we show unrelenting care for our students each day, always upholding the mana of each person in every conversation. We establish and maintain a positive Va, relational space, between all colleagues, students and parents. The school continues to recognise the cultural diversity of New Zealand, and, in particular the importance of Māori as the foundation community of New Zealand. The socio-economic breakdown of the community is of significance. This is typically in the lower wage-earning category. There is a high degree of reliance on state income assistance in one form or another, with most families also in state housing. Ethnic Breakdown: Tangata Whenua Maori 15%, Samoan 57%, Burmese 8%, Cook Is. 3%, Tokelauan 6%, Niuean 2%, Tongan 2%, Latin American 3%, Other 3% Non preference students: 15 (max 15)*

Holy Family School Mission:

“Every learner has the right to a safe, holistic and supportive faith based environment. They will receive a Catholic Education that values their identity, learning and culture of them and their ‘aiga.”

Holy Family School Values / Phenomenal Character traits:

Respect, Excellence, Love, Integrity (R.E.L.I) / Grit, ICAN, Optimum, Mafana, Courage, Mana



Holy Family School Strategic Plan – 2024 - 2026

#believe #achieve

Respect

Excellence

Love

Integrity

Strategic Goals for 2024-2026	What we will see
<p>Strategic Goal 1 Our Catholic values and faith are proudly fostered and demonstrated in all of the School's teaching and learning.</p>	<ol style="list-style-type: none"> 1. Christ is present in our school and in our classrooms. 2. The new RE curriculum is used to develop students and staff in their personal spirituality. 3. Our school collaborating with the wider Catholic community on relevant curriculum and social issues. 4. The Parish and agencies being encouraged to provide connection and support for school 'aiga.
<p>Strategic Goal 2 Our school curriculum provides all students varied opportunities to achieve academic progress.</p>	<ol style="list-style-type: none"> 1. Learning areas of the NZ Curriculum are 'refreshed' as required by the Ministry of Education. 2. Students are provided with a variety of learning opportunities within and outside of the classroom to meet their individual learning needs. 3. Staff work with 'aiga to ensure they are engaged and informed about student's progress. 4. Monitoring student progress, ensure an emphasis on Māori, Pasifika and gender data.
<p>Strategic Goal 3 Cultural Diversity, wellbeing and inclusion is honoured and cherished at school</p>	<ol style="list-style-type: none"> 1. Our class and school environment reflects our bicultural and multicultural diversity. 2. Students and staff feel safe, they treat each other with Mafana and are able to reach out when they need support. 3. All 'aiga are welcomed and feel a part of our school.

